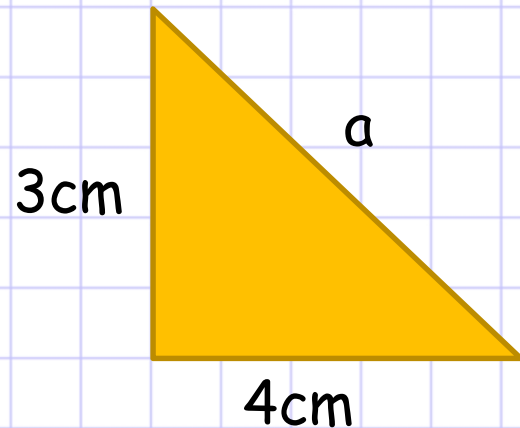
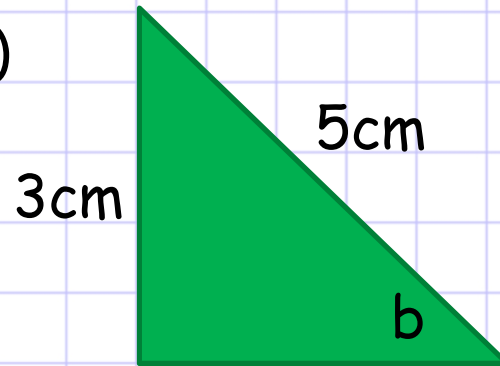


LO: Know when to use Pythagoras or trigonometry.

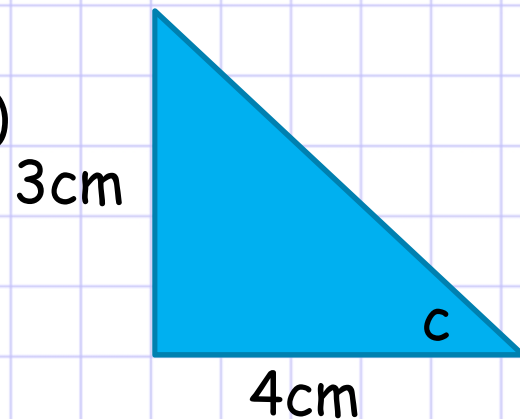
1)



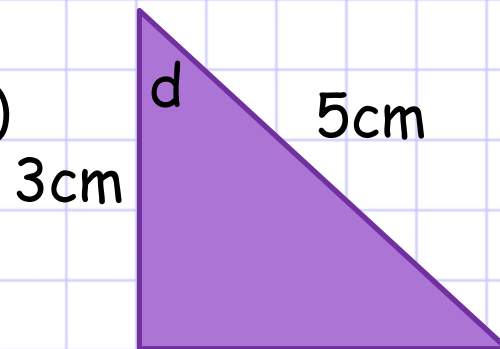
2)



3)



4)



Task

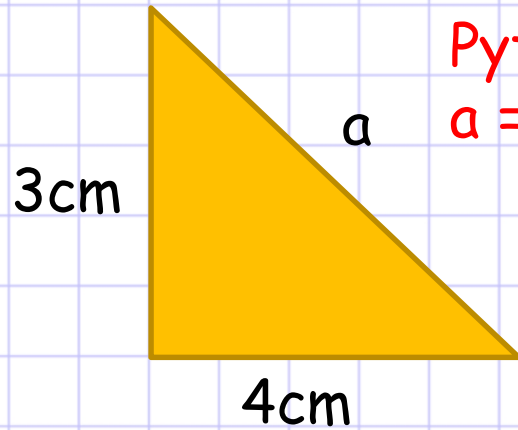
Copy each diagram into your book. Identify if you will need to use Pythagoras or trigonometry, then answer the question. Round to 3 s.f.

If you have **two sides** and you're asked to find the **third**, use Pythagoras.

If it's anything to do with **angles**, it's probably trigonometry.

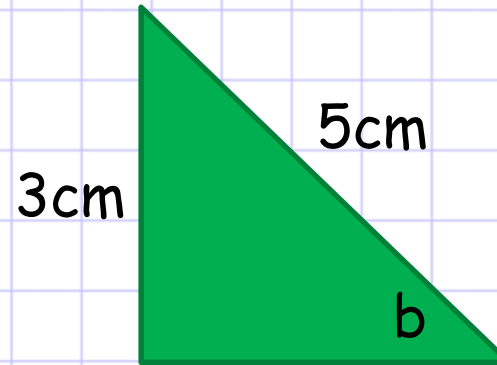
LO: Know when to use Pythagoras or trigonometry.

1)



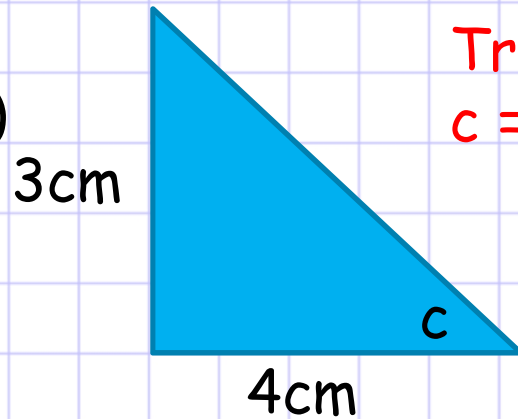
Pythagoras
 $a = 5\text{cm}$

2)



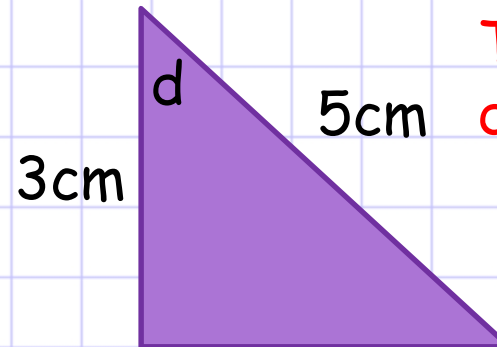
Trig (sine)
 $b = 36.9^\circ$

3)



Trig (tangent)
 $c = 36.9^\circ$

4)



Trig (cosine)
 $d = 53.1^\circ$